

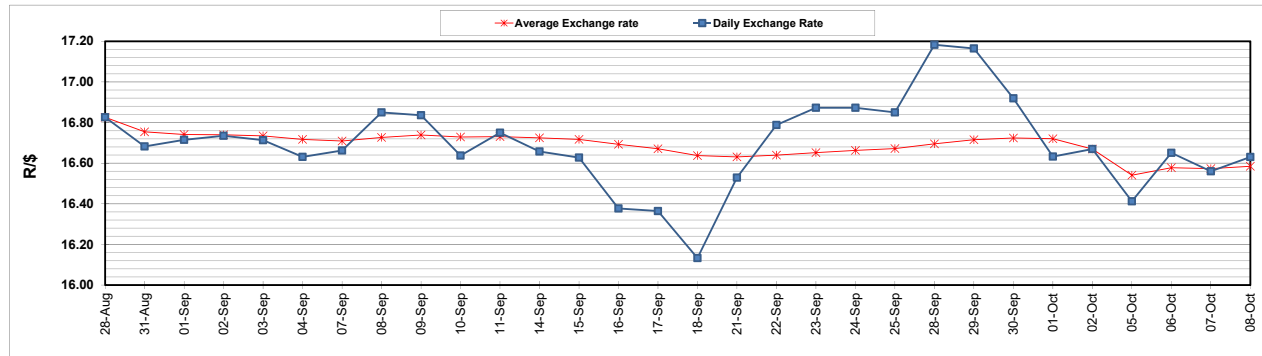
	PETROL 95 ULP	PETROL 93 ULP & LRP	DIESEL 0.05%	DIESEL 0.005%	ILL. PAR.
GAUTENG PUMP PRICE (SA c/l) AS FROM 07/10/2020	1,486.000	1,466.000	-	-	-
WHOLESALE PRICE (SA c/l) AS FROM 07/10/2020	-	-	1,237.560	1,238.960	640.828
SINGLE NATIONAL MAXIMUM RETAIL PRICE	-	-	-	-	798.000
BASIC FUEL PRICE - 08/10/2020 (SA c/l)	541.368	530.455	507.990	509.364	475.931
PRESS RELEASE CONTRIBUTION TO BFP 07/10/2020 - 08/10/2020 (SA c/l)	533.470	523.470	486.630	488.030	436.128
UNIT OVER/(UNDER) RECOVERY - 08/10/2020 (SA c/l)	(7.898)	(6.985)	(21.360)	(21.334)	(39.803)
AVERAGE BASIC FUEL PRICE 02/10/2020 - 08/10/2020	530.463	519.577	491.365	492.852	462.081
AVERAGE UNIT OVER/(UNDER) RECOVERY 02/10/2020 - 08/10/2020	22.207	17.693	49.265	50.978	19.647

ANALYSIS MOVEMENT OF AVERAGE OVER/(UNDER) RECOVERY

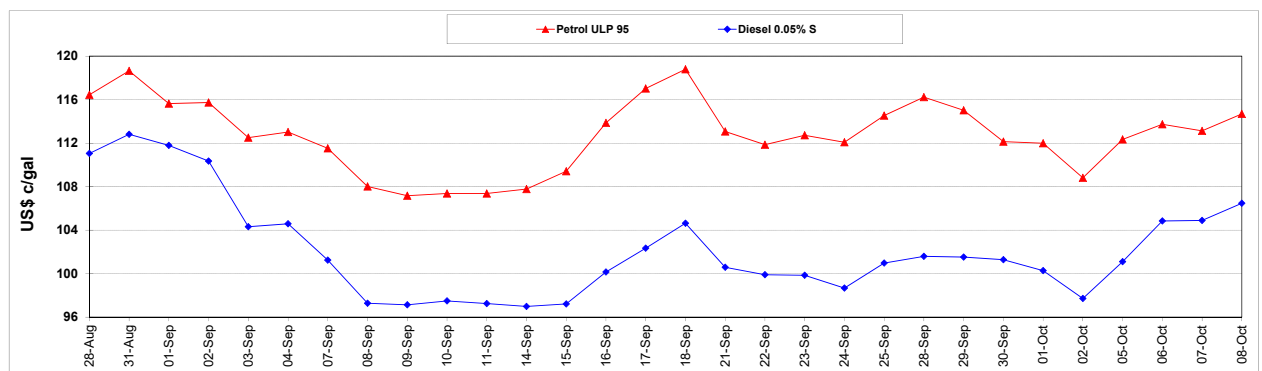
	PETROL 95	PETROL 93	DIESEL 0.05%	DIESEL 0.005%	ILL. PAR.
- MOVEMENT IN INTERNATIONAL PRODUCT PRICES	17.867	13.442	45.245	46.945	15.866
- MOVEMENT IN EXCHANGE RATE	4.340	4.251	4.020	4.033	3.781
AVERAGE UNIT OVER/(UNDER) RECOVERY 02/10/2020 - 08/10/2020	22.207	17.693	49.265	50.978	19.647

R/\$ EXCHANGE RATE - (R/\$16.6305 - 08/10/2020)

EXCHANGE RATE USED IN BASIC FUEL PRICE



INTERNATIONAL PRODUCT PRICES OF BASKET USED IN BASIC FUEL PRICE



BASIC FUEL PRICE IN SA CENTS PER LITRE

